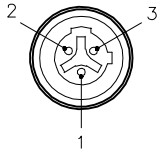
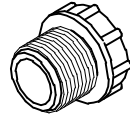


FEMALE END VIEW



- 1 = GROUND
2 = (L2) LOAD
3 = (L3) COMMON

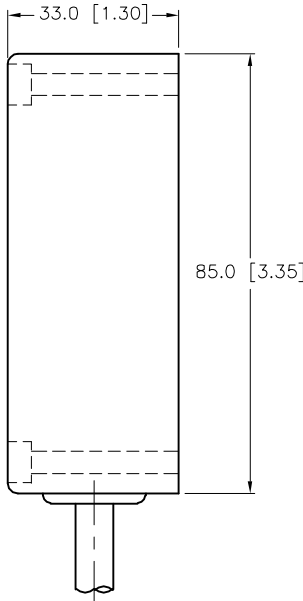
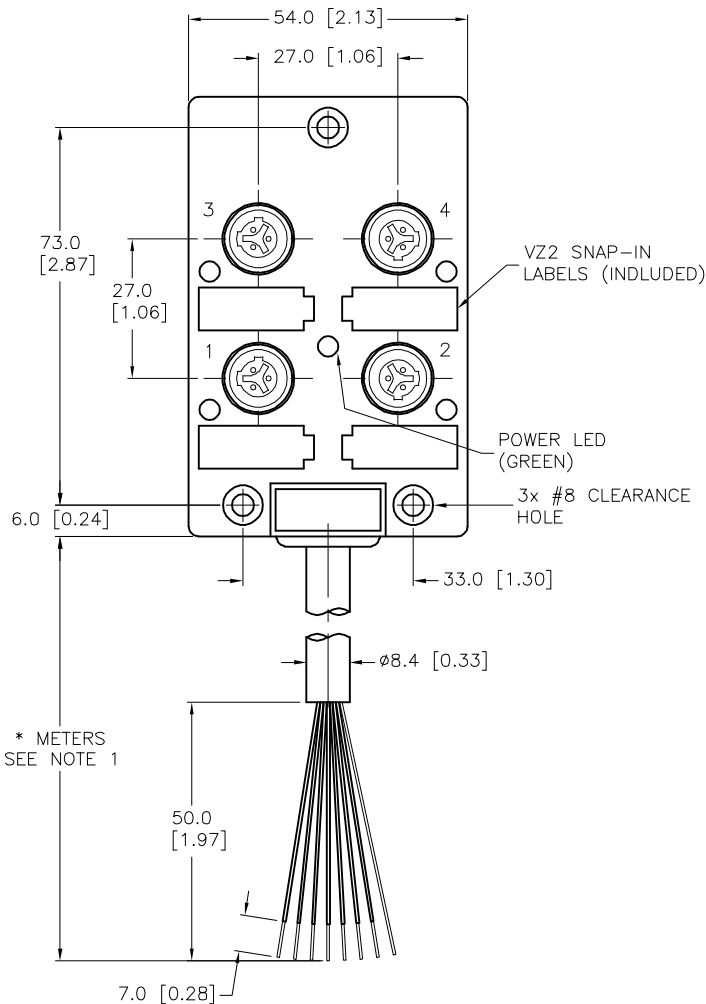
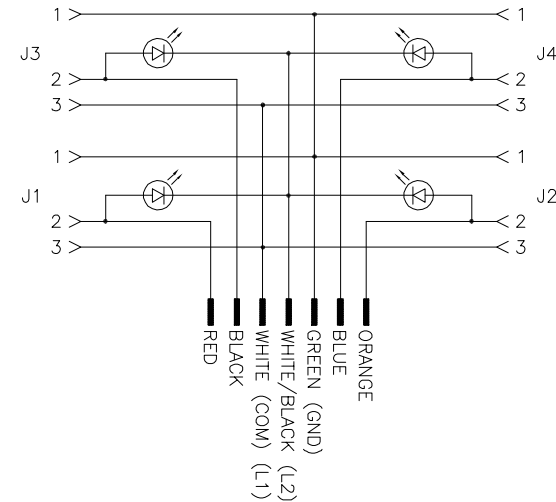


SB-CC CLOSURE
CAPS (2x INCLUDED)

SPECIFICATIONS

HOUWING MATERIAL/COLOR	NYLON/YELLOW
CONTACT MATERIAL/PLATING	BRASS/NICKEL
CONTACT CARRIES/COLOR	NYLON/BLACK
RATED CURRENT [A]	4.0 A PER PORT, 9.0 A TOTAL
RATED VOLTAGE [V]	40 VAC -120 VAC
OUTER JACKET MATERIAL/COLOR	PVC/BLACK
CONDUCTOR INSULATION MATERIAL	PVC
NUMBER OF CONDUCTORS [AWG]	7x18 AWG
DRAIN/SHIELD	20 AWG/ALUMINUM-POLYESTER FOIL
TEMPERATURE RANGE	-40°C to +105°C (-40°F to +221°F)
PROTECTION CLASS	NEMA 1,3,4,6P AND IP67

WIRING DIAGRAM

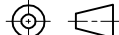


NOTES:

1. "*" INDICATES CABLE LENGTH IN METERS. CONTACT TURCK TO ORDER SPECIFIC LENGTHS.

CABLE LENGTH	TOLERANCE*
ALL LENGTHS	+ 4% (OR 50mm) OF LENGTH - 0% (OR 0mm) OF LENGTH WHICHEVER IS GREATER
STRIP LENGTH	TOLERANCE*
0-7mm	±0.5mm
8-29mm	±1.0mm
30-49mm	±2.0mm
50-69mm	±3.0mm
70-100mm	±4.0mm
OVER 100mm	±5.0mm
* UNLESS OTHERWISE SPECIFIED	

SOURCE DRAWING - FOR REFERENCE ONLY

RELATED DOCUMENTS 1. 2. 3. 4.	3RD ANGLE PROJECTION	<div>THIS DRAWING IS CONFIDENTIAL AND THE PROPERTY OF TURCK INC. USE OF THIS DOCUMENT WITHOUT WRITTEN PERMISSION IS PROHIBITED.</div>		<div>3000 CAMPUS DRIVE MINNEAPOLIS, MN 55441 1-800-544-7769 (763) 553-7300 (763) 553-0708 fax www.turck.us</div>		
						
MATERIAL SEE SPECIFICATIONS	ALL DIMENSIONS DISPLAYED ON THIS DRAWING ARE FOR REFERENCE ONLY CONTACT TURCK FOR MORE INFORMATION	DRFT	RWC	DATE	02/14/07	DESCRIPTION VBKB 40-X5-*
FINISH SEE SPECIFICATIONS		APVD		SCALE	1=1.5	
			UNIT OF MEASUREMENT MILLIMETER [INCH] DO NOT SCALE THIS DRAWING			IDENTIFICATION NO.
					FILE: 777010005	SHEET 1 OF 1

B	UPDATE CABLE DIAMETER	RDS	03/28/12	37623
REV	DESCRIPTION	BY	DATE	ECO NO.